

The user interface for accessing the eDART Data Manager is done with the use of a web browser, such as Microsoft's Internet Explorer or Mozilla' Firefox.

In order to access the eDART Data Managers system settings start up your web browser and enter the following into the address field

<http://edm/> or <http://192.168.2.162/>

The name 'edm' is the default network name for the eDART Data Manager. If this does not work then enter in the IP address of the eDART Data Manager, such as: 192.168.2.250

If you wish to access this web page from the eDART Data Manager itself you would enter:

<http://localhost/>

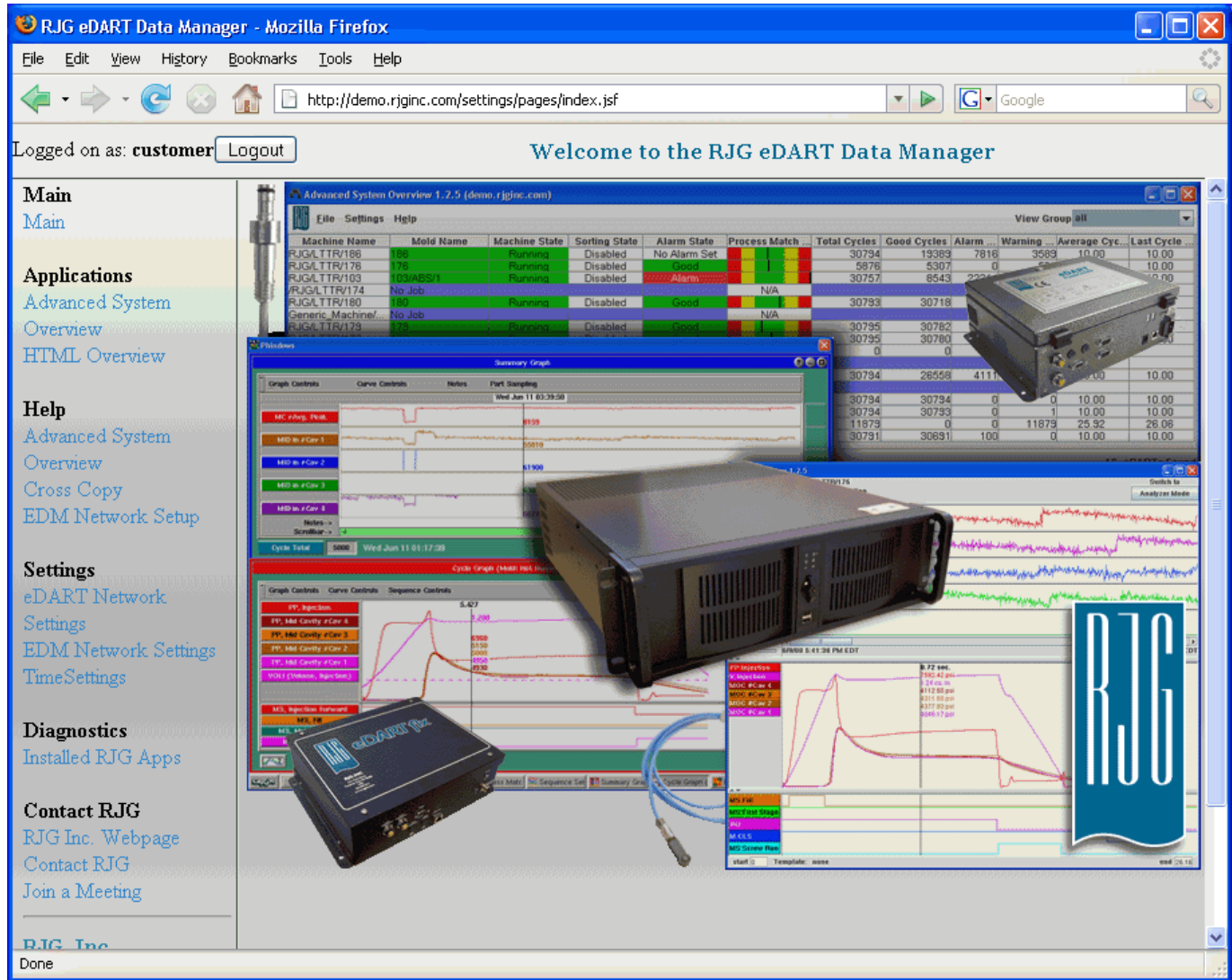
This will bring up the main user interface page

| Machine Name | Mold Name | Machine State | Sorting State | Alarm State | Process Match | Total Cycles | Good Cycles | Alarm | Warning | Average Cyc. | Last Cycle |
|------------------|-----------|---------------|---------------|--------------|---------------|--------------|-------------|-------|---------|--------------|------------|
| RJGL TTR/186 | 186 | Running | Disabled | No Alarm Set | | 30794 | 19369 | 7816 | 3589 | 10.00 | 10.00 |
| RJGL TTR/176 | 176 | Running | Disabled | Good | | 5876 | 5307 | 0 | | 10.00 | 10.00 |
| RJGL TTR/103 | 103/ABS/1 | Running | Disabled | Alarm | | 30757 | 8543 | | | | |
| RJGL TTR/174 | No Job | | | | N/A | 30793 | 30718 | | | | |
| RJGL TTR/180 | 180 | Running | Disabled | Good | | 30795 | 30782 | | | | |
| Generic Machine/ | No Job | | | | N/A | 30795 | 30780 | | | | |
| RJGL TTR/179 | | Running | Disabled | Good | | 0 | 0 | | | | |
| | | | | | | 30794 | 26558 | 4111 | | | |
| | | | | | | 30794 | 30794 | 0 | 0 | 10.00 | 10.00 |
| | | | | | | 30794 | 30793 | 0 | 1 | 10.00 | 10.00 |
| | | | | | | 11879 | 0 | 0 | 11879 | 25.92 | 26.06 |
| | | | | | | 30791 | 30691 | 100 | 0 | 10.00 | 10.00 |

You will notice that there are no functions available beneath the 'Settings' label. This is because you need to log into the EDM to access these functions.

The username is "customer" and the password is 'customer'.

These will always be the defaults and in a future release of the EDM you will be able to change the 'customer' password.



The left side column will display the available options, tools, etc., that you can access from the web page. This document will cover 'eDART Network Settings' and the 'EDM Network Settings'.

'eDART Network Settings' links to the network settings web page that allow you to configure how the EDM handles each eDART.

'EDM Network Settings' links to the web page that allows you to configure the network interface cards on the eDART Data Manager itself.

EDM Network Settings:

Every eDART Data Manager comes with two network interface cards, though you may only be using one. Below is the default screen displayed when you click on the 'EDM Network Settings' link in the left column.

The screenshot shows the 'EDM Network Settings' page in a Mozilla Firefox browser. The browser title is 'RJG eDART Data Manager' - Mozilla Firefox. The address bar shows 'http://demo.rjginc.com/settings/pages/edmnetworksettings.jsf'. The page is logged on as 'customer' with a 'Logout' button. The main content area is titled 'EDM Network Settings' and contains two sections for network configuration.

Interface: eDART Network

| | | |
|---|------------------------------------|---------------|
| Device Name | VIA Rhine II Fast Ethernet Adapter | |
| Mac Address | 00-13-D4-2E-BC-05 | |
| DHCP Enabled | No | |
| IP Address/Subnet mask | 192.168.1.254 | 255.255.255.0 |
| Default Gateway(s) | | |
| DNS Server(s) | | |
| Wins Server(s) | | |
| <input type="button" value="Save Settings"/> <input type="button" value="Reset"/> | | |

Interface: External network

| | | |
|---|-------------------------------|-----------------|
| Device Name | 3Com 3C2000-T Gigabit Adapter | |
| Mac Address | 00-0A-5E-65-F5-CE | |
| DHCP Enabled | No | |
| IP Address/Subnet mask | 75.133.73.233 | 255.255.255.240 |
| Default Gateway(s) | 75.133.73.225 | |
| DNS Server(s) | 24.247.15.53 | |
| Wins Server(s) | | |
| <input type="button" value="Save Settings"/> <input type="button" value="Reset"/> | | |

Left Sidebar:

- Main**
 - [Main](#)
- Applications**
 - [Advanced System Overview](#)
 - [HTML Overview](#)
- Help**
 - [Advanced System Overview](#)
 - [Cross Copy](#)
 - [EDM Network Setup](#)
- Settings**
 - [eDART Network Settings](#)
 - [EDM Network Settings](#)
 - [TimeSettings](#)
- Diagnostics**
 - [Installed RJG Apps](#)
- Contact RJG**
 - [RJG Inc. Webpage](#)
 - [Contact RJG](#)
 - [Join a Meeting](#)
- RJG, Inc.**
 - 3111 Park Drive
 - Traverse City, MI 49686
 - Phone: 231-947-3111
 - Fax: 231-947-6403

Important Note:

The eDART Data Manager unit should have clearly marked tags indicating which Ethernet connection is intended for the eDART network and which connection is for the office network. Be sure you connect to the appropriate network card.

The NIC connecting to the eDART network must be on the same IP network and subnet as the eDARTs!

Setting up the eDART network interface:

| Interface: eDART Network | |
|---|---|
| Device Name | 3Com EtherLink XL 10/100 PCI For Complete PC Management NIC (3C905C-TX) |
| Mac Address | 00-0A-5E-05-9B-1D |
| DHCP Enabled | No <input type="button" value="v"/> |
| IP Address/Subnet mask | <input type="text" value="10.1.17.1"/> <input type="text" value="255.255.0.0"/> |
| Default Gateway(s) | <input type="text"/> |
| DNS Server(s) | <input type="text"/> |
| Wins Server(s) | <input type="text"/> |
| <input type="button" value="Save Settings"/> <input type="button" value="Reset"/> | |

This defines the network interface card (NIC) that is to be connected to the eDART network.

Device Name: This field will display the physical device associated with the eDART Network.

MAC Address: This field will display the Media Access Control address for this device.

DHCP Enabled: This enables or disables the use of DHCP to configure the TCP/IP settings. If this is a dedicated eDART network then set this to 'No'. If the eDARTs are connected on a network shared with the other equipment, and a DHCP service is available, then you can enable this.

Important: If you enable DHCP then you do not need to fill in the remaining fields.

IP Address : If DHCP is disabled then you assign the IP address and network subnet mask here. **This must be the same subnet as the one you will be assigning to the eDARTs.**

Default Gateway: You can supply a default gateway if the eDART network is on the same network as the office, and DHCP is not used, otherwise leave this blank.

DNS Server: You can supply a DNS Servers IP address if the eDART network is on the same network as the office, and DHCP is not used, otherwise leave this blank.

Wins Server: You can supply a Wins Servers IP address if the eDART network is on the same network as the office, and DHCP is not used, otherwise leave this blank.

Save Changes: Click on this button to save your changes.

Reset: Click on this button to return to your previous settings.

Setting up the office network interface:

| Interface: Office Network | |
|---------------------------|---|
| Device Name | Intel(R) 82566DC Gigabit Network Connection |
| Mac Address | 00-1C-C0-18-21-14 |
| DHCP Enabled | Yes ▾ |
| IP Address/Subnet mask | 192.168.2.113 255.255.0.0 |
| Default Gateway(s) | 192.168.2.3 |
| DNS Server(s) | 192.168.2.1 |
| Wins Server(s) | 192.168.2.1 |
| Save Settings Reset | |

This defines the network interface card (NIC) that is to be connected to the office network.

Device Name: This field will display the physical device associated with the eDART Network.

MAC Address: This field will display the Media Access Control address for this device.

DHCP Enabled: This enables or disables the use of DHCP to configure the TCP/IP settings for this interface.

Important: If you enable DHCP then you do not need to fill in the remaining fields.

IP Address : If DHCP is disabled then you assign the IP address and network subnet mask here.

Default Gateway: You can supply a default gateway if DHCP is not used, otherwise leave this blank.

DNS Server: You can supply a DNS Servers IP address if DHCP is not used, otherwise leave this blank.

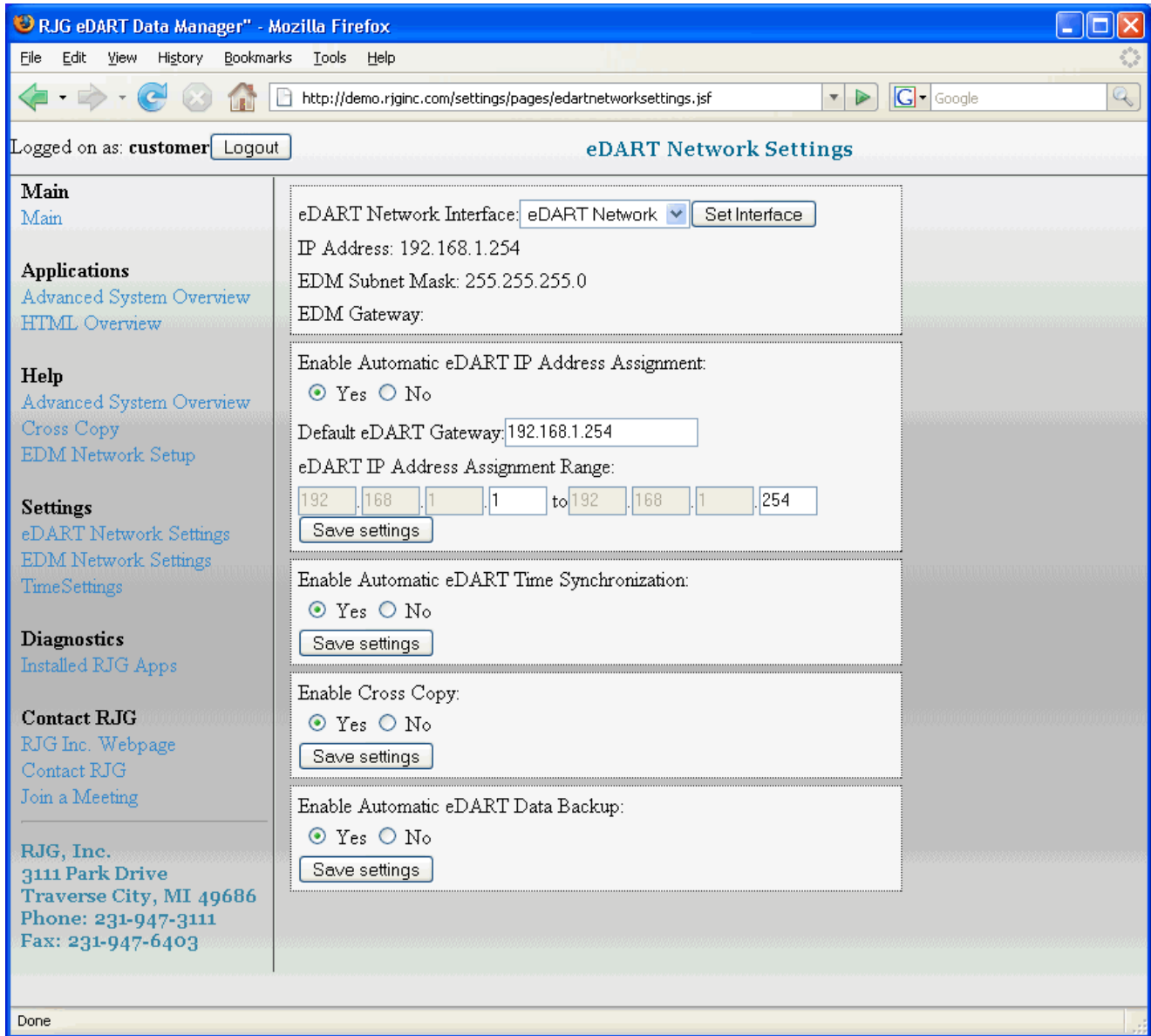
Wins Server: You can supply a Wins Servers IP address if DHCP is not used, otherwise leave this blank.

Save Changes: Click on this button to save you changes.

Reset: Click on this button to return to your previous settings.

eDART Network Settings:

Below is the web page displayed when you click on the 'eDART Network Settings' link on the left side column.



These are the settings that control what is sent down to the eDARTs and how they will configure their network interface.

This page not only lets you setup the IP addresses for the eDARTs, but also lets you enable or disable certain features available with the eDART Data Manager, such as cross copy or data backup.

Important Note:

The NIC connecting to the eDART network must be on the same IP network and subnet as the eDARTs!

eDART Network Interface: eDART Network ▾ Set Interface

IP Address: 0
 EDM Subnet Mask: 255.255.0.0
 EDM Gateway: 192.168.2.6

eDART Network Interface: This allows you to select either NIC as the eDART network. This can be used in situations where only one network is available, or if one of the NIC's fail.

Set Interface: This button is displayed when you change your selected NIC. Click on this if you want to switch to the other network card and use the IP address class assigned it it.

IP Address: This displays the IP address assigned to the selected network interface card (NIC). Also displayed is the subnet mask and any gateway assigned.
Verify that this IP address is on the same network and subnet as the eDART

Enable Automatic eDART IP Address Assignment: Yes No

Default eDART Gateway:

eDART IP Address Assignment Range:
 to

Save Changes

Enable Automatic eDART IP Address Assignment: This is where you can turn on or off this feature.

Default eDART Gateway: This should be the same IP address as the eDART NIC. It tells the eDART to forward packets to this interface.

eDART IP Address Range Assignment: This is where you define the range of IP address that will be assigned to the eDARTs as they are detected on the network.

Save Changes: Click on this button to save your changes.

Enable Automatic eDART Time Synchronization: Yes No

Save Changes

This section allows you to enable or disable the eDART Time Synchronization feature. Click 'Save Changes' to save your selection.

Enable Cross Copy: Yes No

Save Changes

This section allows you to enable or disable the eDART Cross Copy feature. Click 'Save Changes' to save your selection.

Enable Automatic eDART Data Backup: Yes No

Save Changes

This section allows you to enable or disable the eDART Data Backup feature. Click 'Save Changes' to save your selection.

Additional Notes:

Single Network Configurations:

If the eDART Data Manager and the eDARTs are all on the same network at the rest of the office network then only one network interface card needs to be used. You can use either of the network interfaces on the eDART Data Manager. Just be sure you setup the same one you are connecting to. Refer to the tag labels on the back of the eDART Data Manager.

In a single network configuration DHCP should be disabled and a range of IP addresses set aside for the eDART Data Manager and the eDARTs. The eDART Data Manager can still automatically assign these IP addresses to the eDARTs.

The eDART Data Manager uses a proprietary protocol to perform the function of assigning IP addresses to the eDART, and does not use DHCP.

If DHCP must be used for the eDART Data Manager then you need to ensure that the IP addresses assigned to the eDARTs are always on the same IP network and subnet as the eDART Data Manager.

The eDARTs can be configured to use DHCP also. Again, you must ensure that they will always be on the same subnet as the eDART Data Manager. *The eDARTs can not use DHCP to obtain their network address information.*

Important Note:

The NIC connecting to the eDART network must be on the same IP network and subnet as the eDARTs! So if the eDARTs are setup as 192.168.1.xxx/255.255.255.0, then the NIC used to connect to the eDARTs must also be 192.168.1.xxx/255.255.255.0

Security:

In future releases user name and password security will be available to control access to key functions of the eDART Data Manager.

If you have any questions please contact RJG at 231.947.3111 and ask for customer support.