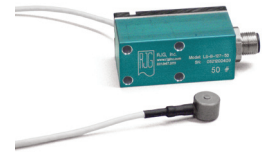




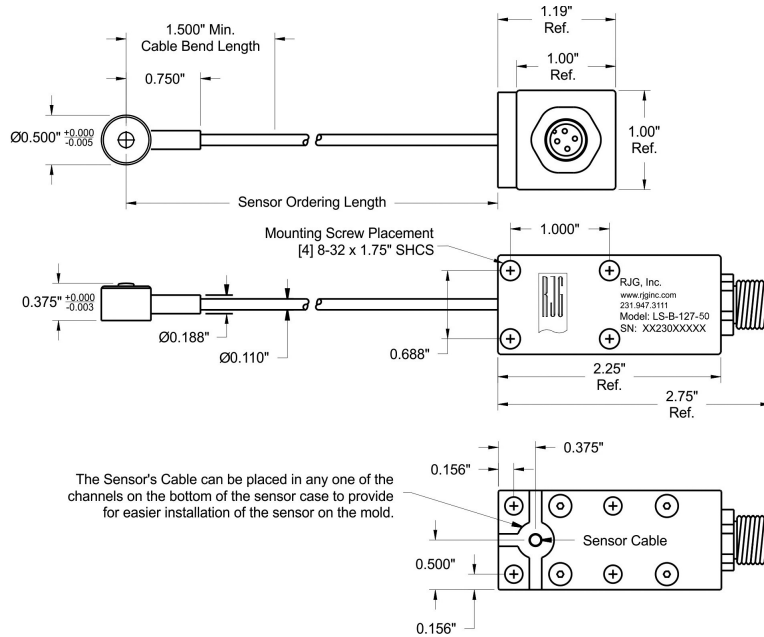
# Lynx™ 50 lb Button Style Cavity Pressure Sensors

LS-B-127-50

Lynx digital 50 lb indirect (under the pin) pressure sensor.



## Product Dimensions



	English	S.I.
Force Range	50 lb	222 N
Accuracy	< .75% Full Scale	< .75% Full Scale
Maximum Temperature - Standard Sensor	250 °F	121 °C
Maximum Temperature - Hi-Temp Sensor	425 °F	218 °C
Maximum Temperature - Case	140 °F	60 °C

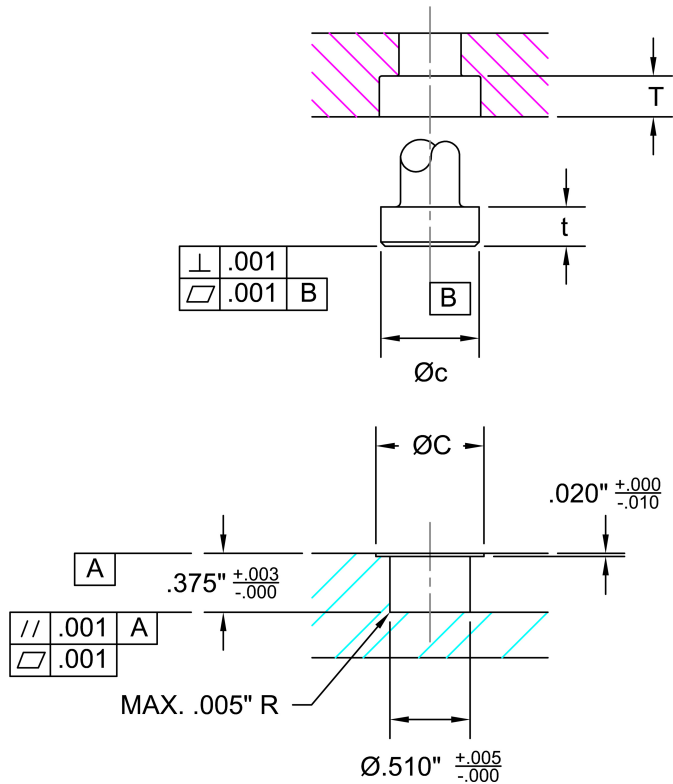
Appropriate Pressure/Load	Appropriate for Pin Sizes
Low Pressure Application (Neoprene, Silicone, etc.)	3/64", 1/16" 1.5 mm, 2.0 mm
Typical Thermoplastic Application (ABS, Polypropylene, etc.)	3/64"

**RJG, INC.**

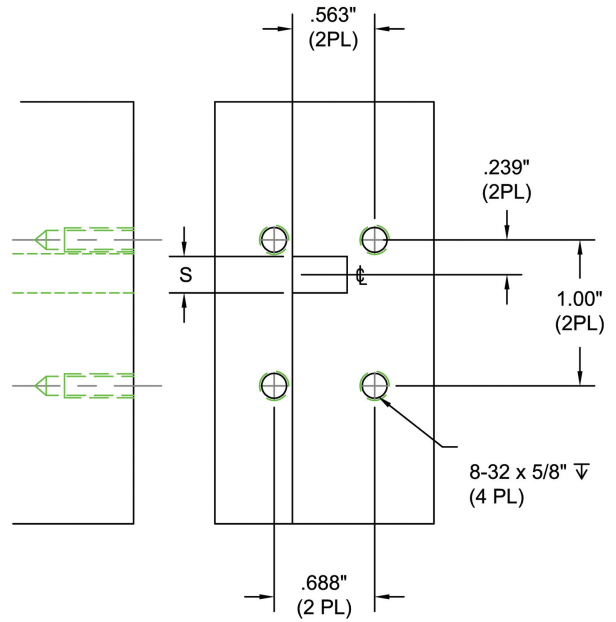
www.rjginc.com | 231-947-3111

**Installation Dimensions**

**Sensor Pocket and Ejection Pin Relief**



**Sensor Case Mounting**

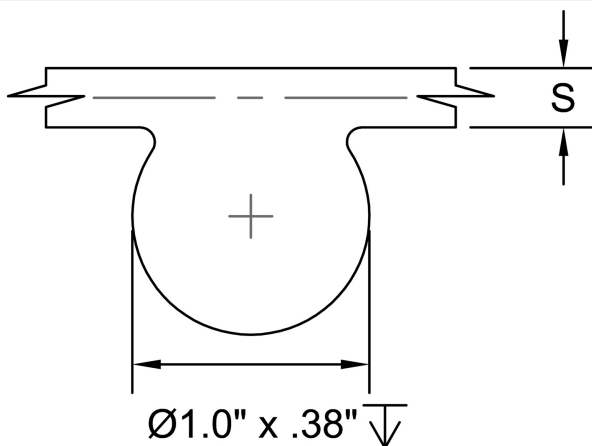


**Notes:**

$T = (t + .010'') \begin{smallmatrix} +.0.1'' \\ -.0.0'' \end{smallmatrix}$  Ejector Pin Head Clearance  
 $C = (c + .125'') \begin{smallmatrix} +.0.5'' \\ -.0.0'' \end{smallmatrix}$  Counter Bore Clearance

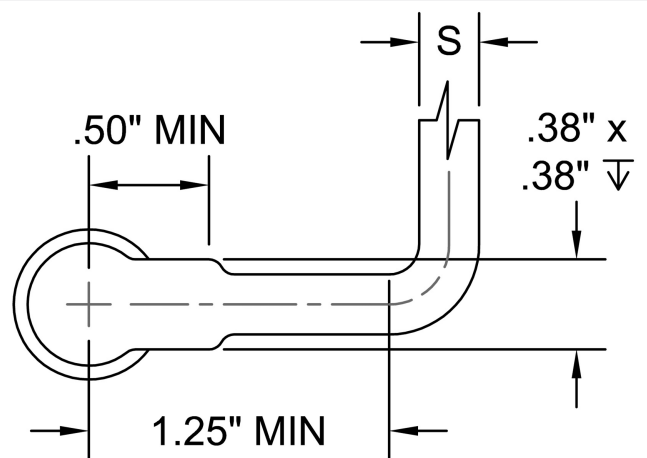
Min 3" Clearance from Micro Connector

**Spare Wire Pocket**



Pocket to store excess sensor wire cable (if necessary). 0.5" minimum internal turn radius for cable.

**Sensor Cable Channel**



$S = .25''$  Wide Slot for Lead Wire