



DARTAlert™

User Manual

©2001



Making Molding Simple™

Table of Contents

RJG Support	1
Product Support	1
Technical Assistance	1
Quick Start	2
Objectives	2
Philosophy	2
System Requirements	2
Startup Steps	2
DARTAlert™ Installation	4
Getting Started	5
DARTAlert™ How To	6
How to Setup for Numeric Paging	6
How to Setup for Voice Paging	7
How to Setup for Alpha Numeric Paging or E-mail	8
How to Deal with Repeating Events	9
How to Start and Stop Paging	10
How to Scan the Network for DARTVision™ Collectors	10
How to Setup the Modem Communications Port	11
How to Setup the Machines to Monitor	11
DARTAlert™ Reference	13
Database Details	13
Sound File Details	13
Glossary	13

RJG Support

RJG, Inc. offers support services throughout North America.

Product Support

Contact your RJG, Inc. representative for:

- Sales and Order Support
- Product Technical Training
- Warranty Support
- Support Contracts

Technical Assistance

If you need to contact RJG, Inc. for technical assistance, please review the information in this manual first, then call your RJG representative, or contact RJG Customer Support at 1-231-947-3111.

You can visit us on the web at www.rjginc.com.

Quick Start

Objectives

DARTAlert™ is a program that allows the user to page numeric pagers when an injection molding machine rejects, alarms, starts, or stops when monitoring the RJG, Inc. *DARTVision™* or *Insight System™*. It allows the user to send voice pages over a speaker system using custom sound files. With the use of e-mail, the system can also send alpha-numeric pages and e-mail notifications.

Philosophy

DARTAlert™ provides a simple-to-use interface that allows for immediate notification of problems. This software allows molders to respond quickly to problems that might not get noticed immediately any other way.

System Requirements

- Pentium class computer running a Windows™ operating system
- Modem with dedicated phone line for paging capability
- Sound Card with output (if using voice option)
- CD Drive (for software installation)
- RJG Inc. *DARTVision™* software running for each machine being monitored, or RJG, Inc. *Insight System™* eDARTs running on a network
- Network Connection to the *DARTVision™* Collector Computer and/or the *Insight System™* eDARTs
- TCP/IP networking protocol enabled on the network
- Microsoft Outlook installed on the PC running *DARTAlert™* with a valid profile installed for the e-mail/alpha-numeric pager option.

Startup Steps

Installation of the software:

1. With a *DARTVision™* Collector or eDART™ running, install the *DARTAlert™* software. Follow the directions in the Installation section of the manual to install the software.
2. Once the *DARTAlert™* software is installed, start it up. The software will have you scan the network for a connection to a *DARTVision™* or *Insight System™*. This is not required immediately, but is easier if the *Insight System™* or *DARTVision™* system is already running when you start the software.

Protocol Note:

The automatic connection between eDART™/DART*Vision*™ and DART*Alert*™ systems requires the Internet protocol of TCP/IP to function. It will also NOT connect on its own across routers/bridges that block broadcast messages (255.255.255.255). You CAN still connect, you will just have to connect manually to the status directory of the DART*Vision*™ system or the IP Address of each eDART™.

Collector Note:

If multiple Collectors all point to the same STATUS location, the DART*Alert*™ software can monitor them all at the same time.

INSIGHTAlert™ Installation

Installation:

1. Start Windows™
2. Insert the DARTAlert™ CD into your CD Drive
3. The Setup program should automatically start the program. If it does not, do the following:
 - Choose Run from the Start Menu.
 - Type 'D:\Setup' or replace the D with the drive letter of your CD Drive.
4. If you are prompted to reboot, you will have to repeat steps 1 – 3
5. After this you will see the screen below. Click *OK* to continue.

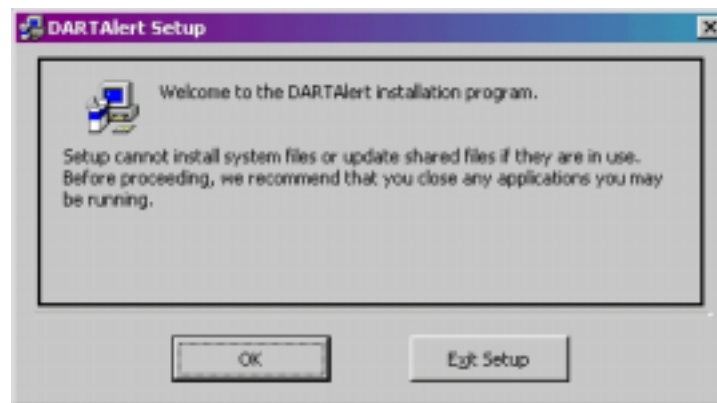


Figure 1

6. After this point you should see:



Figure 2

7. Click the computer icon at the top left corner to install, or click the *Change Directory* button if you wish to install to a different directory
8. You will then be asked to give the system a program group to save shortcuts to:

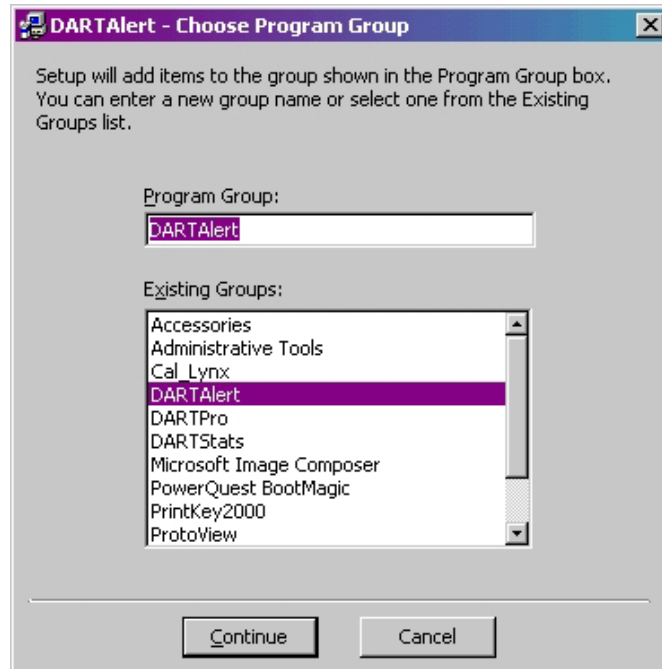


Figure 3

9. Take the default, click the *Continue* button, and the system will install the software.

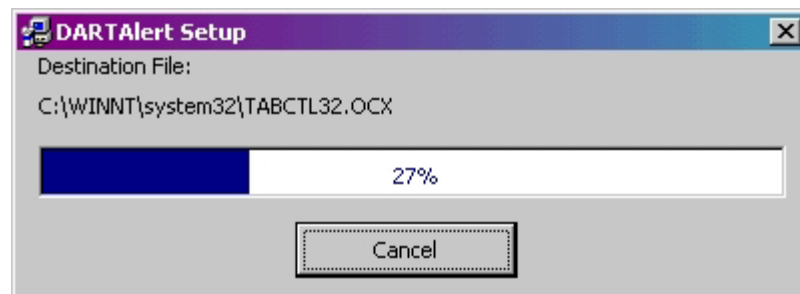


Figure 4

Getting Started

From the START/PROGRAMS menu of Windows™, find the DARTAlert group and double click on the DARTAlert shortcut. Once the program is started for the first time, you will see a screen similar to this:

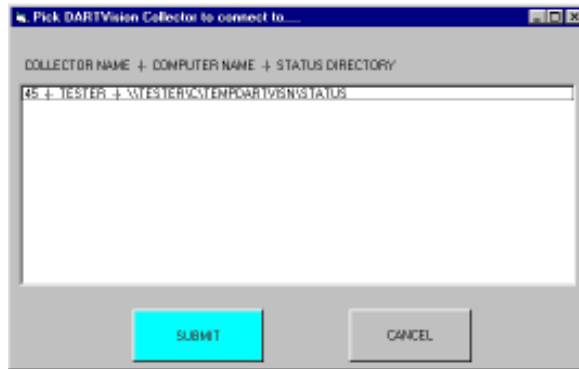


Figure 5

Once you have clicked on the row that represents the Collector you wish to monitor, click the *SUBMIT* button. You will then be told where the status directory is on the Collector.

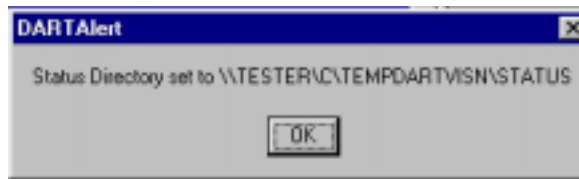


Figure 6

Once this is acknowledged, you will be presented with the main *DARTAlert™* screen. You will see the *START* button as a *WAIT* button that flashes while the system connects to the *DARTVision™* or *Insight System™*. It will stop flashing once it is done connecting.



Figure 7

You are now ready to setup the software to dial out or play a sound when a press changes state. See the “How to Setup for Numeric Paging” section on page 6 for more details.

DARTAlert™ How To



How to Setup for Numeric Paging

From the main menu, choose Setup, then Sound and Dialer Setup.

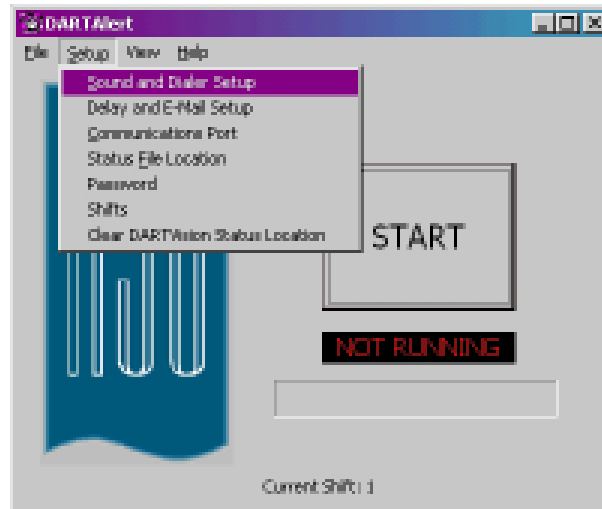


Figure 8

Then you will see the Machine Setup Screen:

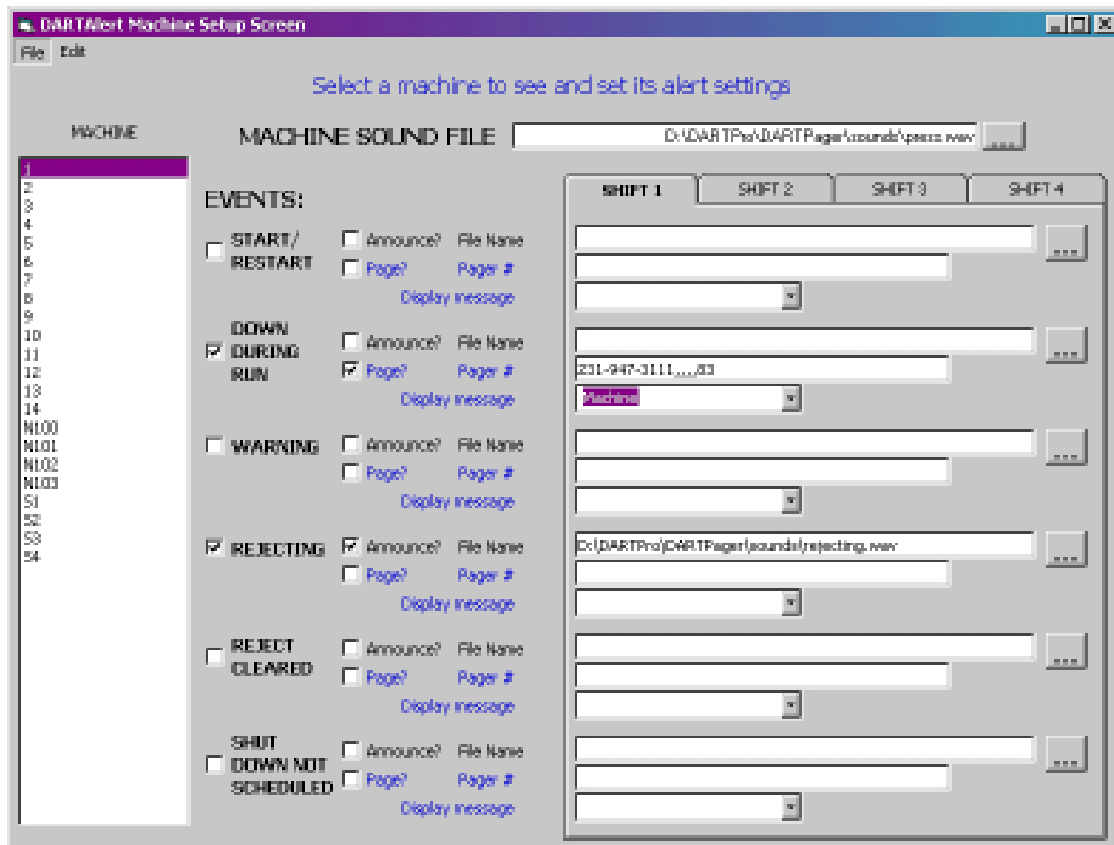


Figure 9

The system can be setup for notification of any of the following events:

- Machine Start
- Machine Down
- Warnings
- Alarms
- Shut Downs

The system can send out a page or play a sound (or both). Each machine has its own settings.

For example, if you wanted to set up a dial up pager whenever Press 9 has a reject, you would:

- Click on Machine 9 in the Machine List.
- Click the check box for “REJECTING”.
- Click the check box for “Page?” (located to the right of “REJECTING”).
- In the “Pager #” box, type in the pager number to dial, including commas for delays.
- In the “Display message” box, type in the message to display (9) or click on the selection arrow and choose “Machine”.

When the press has a reject, it will dial up the phone number in the “Pager #” box, and will dial the numbers displayed in the “Display message” box.

NOTE: **This will only work for Numeric Machine numbers.** If you were to choose a machine with a character name, you would have to put a number in the “Display message” box.

If you want to play a sound, the system requires two (2) sounds for each event. The first sound is the machine sound, such as “Press One”, the next sound is the event sound such as “Is Rejecting”. These can be any Windows wave (.wav) file on the computer, and can be customized by the end user.



How to Setup for Voice Paging

Do as you would for a numeric page, by selecting the press to setup. Then click the Radio button next to the Announce message for the events you want information on. You will need to have a file name in the MACHINE SOUND FILE box that will play every time this press has an event, then you will need a file name in the box across from the event you want notification of.

The system will play the MACHINE SOUND FILE, followed by the event sound file every time an event occurs that has both the Event and the “Announce?” checkbox checked.

In Figure 9, you can see that Press 1 will play a sound every time the press rejects a part. First, it will play the wave file listed in the MACHINE SOUND FILE box. Immediately after that, it will play the sound file listed to the right of the “REJECTING” checkbox.



How to Setup for Alpha Numeric Paging or E-mail

Do as you would for a numeric page, by selecting the press to setup. Then click the Radio button next to the e-mail message for the events you want e-mailed on. In the pager number box, put the email address you wish to notify for each event. You can put one name, or a group name. **Do not put multiple e-mail addresses in this box, use a group name for multiple entries.** In the message box, put the message to display on the pager, or e-mail. Up to 255 characters are allowed

The system will send an e-mail with the subject of “DARTAlert Automated Message Sent at:” and the date the e-mail was sent. The text of the message will be whatever was entered in the message box of *DARTAlert™*.

You will also need to enter a Profile name to use to send e-mails. This is done on the Setup screen. From the main menu, choose “Setup” then choose “Delay and E-Mail Setup”. You will then enter the Outlook Profile name into the “E-Mail Profile name to use” box. See Figure 10.

The first time you press the START button, and you have a profile name loaded, you may get an error if the profile name is not correct. An Outlook message box will appear, showing the proper name. You can copy/paste this name into the *DARTAlert™* package (right mouse over the highlighted text to get the copy/paste menu). The default profile name for systems without profiles may look like “MS Exchange Settings”. Once you have the profile name correct in *DARTAlert™*, you will not need to re-enter it everytime you start the software.



How to Deal with Repeating Events

From the main menu, choose Setup, then Delay and E-Mail Setup, which will show the screen below:

Delay and E-Mail Setup

Delay time between identical Alerts:
0 Minutes

Repeat REJECT Alerts for Continuous Rejects?
Every 25 Minutes

Repeat DOWN TIME Alerts for Continuous Downtimes?
Every 20 Minutes

Repeat WARNING Alerts for Continuous Warnings
Every 10 Minutes

Additional Modem timeout Delay
2 Seconds

E-Mail Profile name to use
Email Account

Ok Cancel

Figure 10

This screen allows the user to set up delay times between identical alerts as well as timer delays before repeating a dial or sound play when a press remains in a Reject, Warning, or Down state for a period of time.

The Additional Modem timeout Delay is an optional way to increase the amount of time added to the modem to allow it to finish its page. This may be required to be extended if your system only gets parts of a page displayed, before it finishes.

Adding commas to the display message automatically adds seconds to the time allowed for each page. Each comma represents an additional period of time that is based on what the modem is set for delay for a comma. Typically this is 2 seconds. Review your modem documentation for more information. Look for information on Register S8.



How to Start and Stop Paging

Once the presses you want to alert on are setup, go to the main screen and click the *START* button. This will put the system into Monitor mode, and it will monitor the DART*Vision*[™] system for any change in status.

You should see the *START* button change to *STOP*, and the Progress bar will move right to left, then back again to signal that it is running.

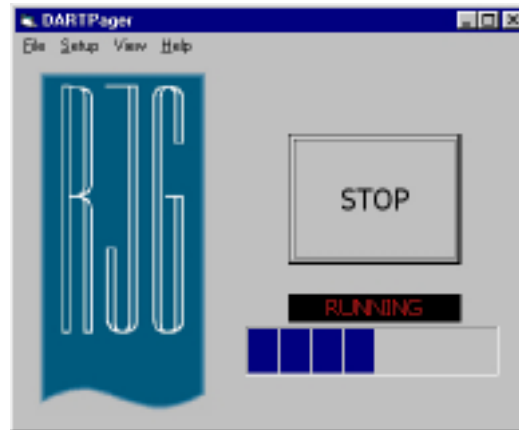


Figure 11



How to Scan the Network for DART*Vision*[™] Collectors

From the main menu, choose Setup, then Status File Location and you will see a screen like this:

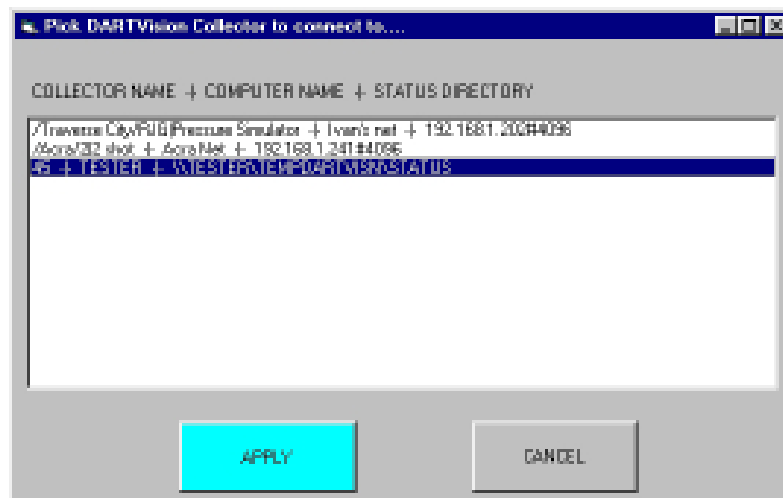


Figure 12

Click on the Row that represents the DART*Vision*[™] Collector you wish to connect to, then click the *APPLY* button.

This will change the main working directory for DART*Alert*[™] to the directory of the Collector you have chosen.



How to Setup the Modem Communications Port

Refer to your modem properties to find the communication port your modem uses. Then in the *DARTAlert™* software, go to the menu choice of Setup, then Communications Port, and select the port your modem uses. If you receive an error, it will give you a choice to set it to another port.



How to Setup the Machines to Monitor

From the main menu, choose Setup, Status File Location. The system will scan the network for any active *DARTVision™* or *Insight System™* machines that are actively running.

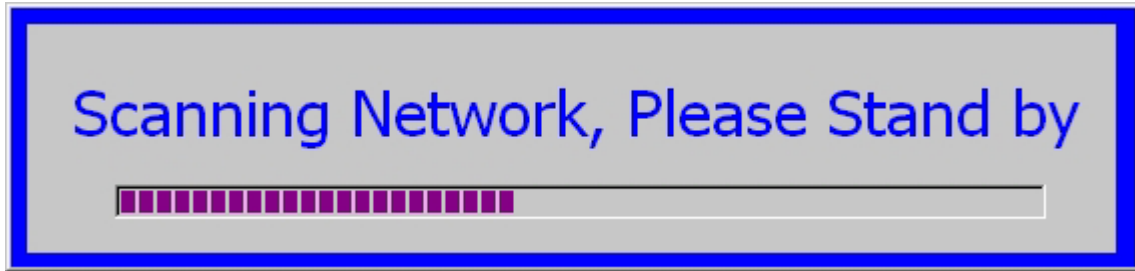


Figure 13

Then you should see a list of active *DARTVision™* and *Insight System™* eDARTs. Click on the machine you wish to monitor (only one of the eDARTs) and click *SUBMIT*.

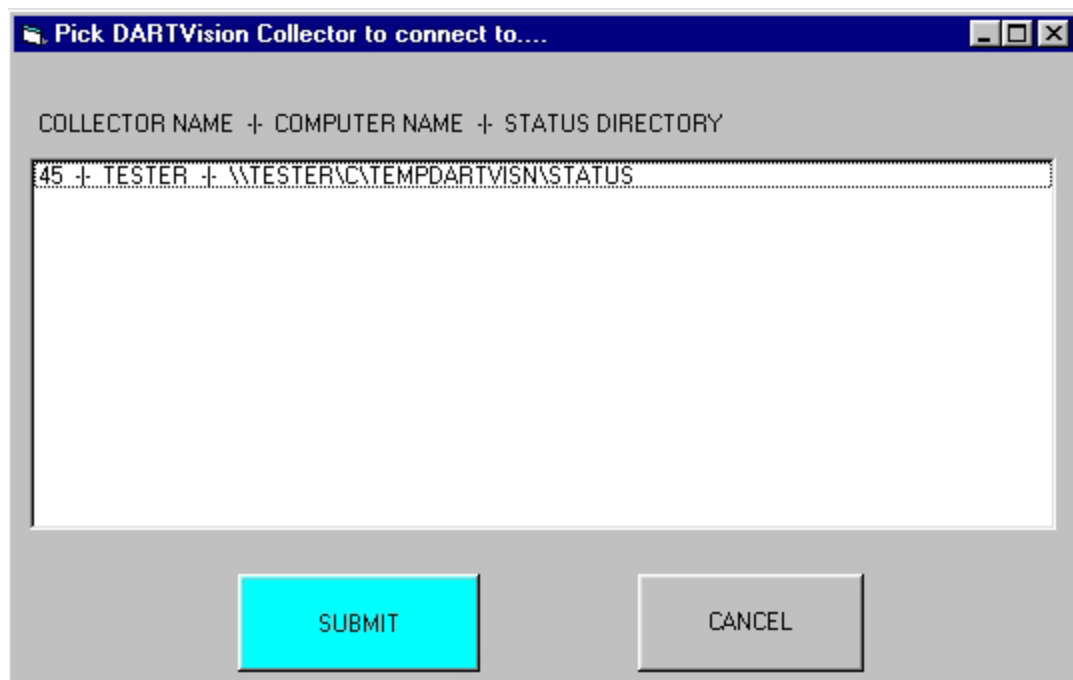


Figure 14

If you pick an eDART™, the system will ask if you want to connect to just one eDART™ or all of them in the same Group. Choose the option you want, and you will see a screen like this:

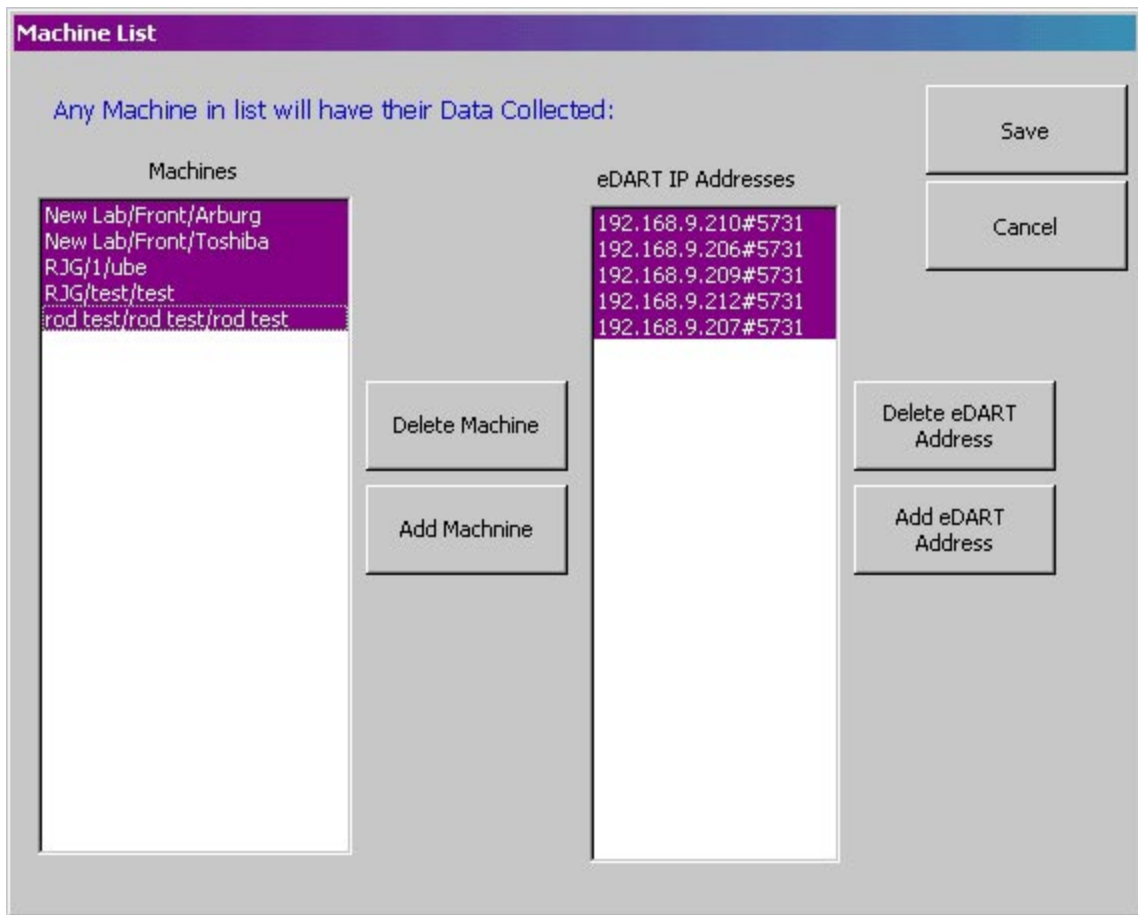


Figure 15

If you are working with Insight, and the eDARTs do not show up on the list, you can add them manually. You will need to know the IP Address of each eDART™, and the Full Machine Name that is used for each one.

DARTAlert™ Reference

Database Details

DARTAlert™ utilizes an Access97™ database format. All tables are unrestricted for access.

Sound File Details

The sound files used are standard Windows™ wave files. These files end with the extension .wav.

If you wish to replace the files with your own, or to customize any file, it is only necessary to put the wave file somewhere on the computer running DARTAlert™, preferably the Install directory, under the Sounds subdirectory. Then point the system to the new file under the Machine Setup screen (See Figure 9).

Glossary

DARTVision™

An RJG Process Monitoring and Control System.

Insight System™

An RJG Process Monitoring and Control System.

Collector

RJG's term for the computer running DARTVision™ and actively collecting process information.