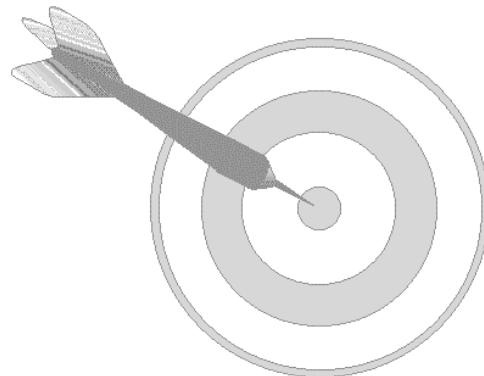


DARTStamp™

Label Printer Program

Installation & Use Manual



Making Molding Simple™

Table of Contents

DARTStamp™ Label Printer	2
How to Install DARTStamp™ in Windows95	2
DARTStamp™ Features	3
Command Line Options:	3
Left Margin	3
Label Lines	3
Printer.....	3
Test Button	3
Machines List Field	3
Label Format (Editable Text Field).....	3
Help.....	4
Exit.....	4
DARTWin™ Related Codes:	4
Time & Date Related Codes:.....	4

DARTStamp™ Label Printer

The DARTStamp™ Label Printing program is a completely configurable software program which allows you to print key information about parts that are being produced based on the information that is being stored in the Status file. It is written for Windows 95/NT and can be run using a Windows driver. You can have more than one label program running at the same time and pointing to the same Status file. Each one can be set up to print out only the labels for the machines selected. Figure 1-1 is an example of a screen that is used to setup the label and run the program.

How to Install DARTStamp™ in Windows95

1. Insert the diskette into drive A. Go to <Start>, then <Run>. The executable to install DARTStamp™ is *Setup.exe*.
2. The user will be prompted to add icons to the Program Group listed. The user can type a new Group name or choose an existing group from the list. Click on <Next>.
3. The Install program will install the software to the drive and directory listed. Click <Next> to accept this pathway or <Change> to enter the pathway where your Status file is located.

For Example: C:\DARTVISN\STATUS

When the Install program cannot find the status.sta file, the following message will appear:

You started the program in a different directory, other than where the status.sta file is; you will be required to add a command line parameter to the shortcut. Click <NEXT> to continue with the installation.

4. When the installation is completed, click on <Finished>.

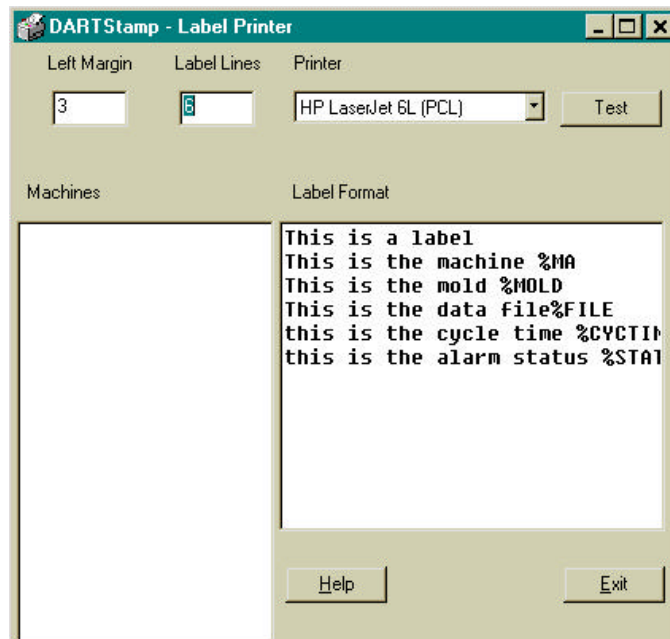


Figure 1-1: DARTStamp™ screen

DARTStamp™ Features

Command Line Options:

STATUS: Path of Status file

Examples: STATUS:C:\DARTVISN\STATUS
STATUS:\\collector\c\dartvisn\status

CONFIG: Name of the Config file DARTStamp™ defaults to: dv_label.

Examples: CONFIG:active1
CONFIG:active2

Left Margin

This field indents the left margin by adding spaces to the beginning of each line. The number entered equals the number of spaces to be added for the left margin.

Label Lines

This field defines the number of lines on the label. The user may have to experiment with this field depending on the size of the label being used.

Printer

This field defines the name of the Windows printer the label will be printed to. All system printers will be listed in this combo box.

Note: Only make labels on fixed/integral line printers or label printers which use a standard serial or parallel port interface; integral designating 6 lines per label for example, not 6.5 or 6.2. Also, use only fixed pitch printer fonts only and do not use bar codes.

Test Button

Clicking on this button will print a test label to the printer selected.

Machines List Field

The machines that DARTWin™ reports to in the Status file will be listed here. The check box next to the machine name is used to activate which machines you would like labels printed for. The Table 1 contains different items, which relate to the time the label was printed.

Label Format (Editable Text Field)

This is where the user enters in the information that they want printed on the label. The user can click on this field and type any text that needs to appear on the label, or enter in any combination of the codes from the symbols listed below. When entering the coded symbols, remember that the symbols are case sensitive. You must press <Enter> when you want a line to break.

Help

Brings up the Help File.

Exit

Will Exit the Label Program. A warning is prompted to inform the user that no more labels will be printed.

DARTWin™ Related Codes:

Directive	Meaning (What Will Appear On The Label)
%STATUS	Alarm Status (Good, Warn, Reject, etc.)
%CYCTIME	Cycle time in seconds (x.xx)
%FILE	This is the file name where DARTWin™ stored the data in
%MA	Name of the Machine
%MOLD	Name of the mold

Table 1

Time & Date Related Codes:

Directive	Meaning (What Will Appear On The Label)
%a	Locale's abbreviated weekday name (Mon, Tue, etc.)
%A	Locale's full weekday name (Monday, Tuesday, etc.)
%b	Locale's abbreviated month name (Jan, Feb, etc.)
%B	Locale's full month name (January, February, etc.)
%c	Locale's appropriate date and time representation (Mon Mar 23 12:14:54 1998)
%d	Day of the month (01-31)
%D	Date in the format mm/dd/yy (03/23/98)
%FF	Form Feed
%h	Locale' abbreviated month name (Jan, Feb, etc.)
%H	24 Hour Time format (00-23)
%I	12 Hour Time format (01-12)
%j	Day of the year (001-366)
%m	Month as a decimal number (01-12)
%M	Minute as a decimal number (00-59)
%p	Locale's equivalent of AM or PM
%r	12 Hour clock using AM/PM notation (HH:MM:SS)
%S	Seconds as a decimal number (00-59)
%T	24 Hour clock format (HH:MM:SS)
%U	Week number of the year (00-52) where Sunday is first day of the week
%w	Weekday is a decimal (0-6) where Sunday is 0
%W	Week number of the year (00-52) where Monday is first day of the week
%x	Locale's appropriate date representation (Mon Mar 23, 1998)
%X	Locale's appropriate time representation (12:38:13)
%y	Year without century as decimal (00-99)
%Y	Year with century as a decimal number (1900-1999)
%z,%Z	Time Zone Name (Eastern Standard Time) or by no characters if no time zone exists.

Table 2

Here is an *example* of the information entered into Figure 1-1:

Entered as:

This is a label
This is the machine %MA
This is the mold %MOLD
This is the data file %FILE
this is a cycle time %CYCTIME
this is the alarm status %STATUS

Will be Printed as:

This is a label
This is the machine Nissei-23
This is the mold G1256
This is the data file 8128100
this is a cycle time 41.51
this is the alarm status Good

Where:

This is a label (Entered Text) <Enter>
This is the machine (Entered Text) **Nissei-23** (Machine Name) <Enter>
This is the mold (Entered Text) **G1256** (Mold Name) <Enter>
This is the data file (Entered Text) **8128100** (File Name) <Enter>
this is a cycle time (Entered Text) **41.51** (Cycle Time) <Enter>
this is the alarm status (Entered Text) **Good** (Alarm Status) <Enter>