



## Data Extractor Installation and Setup

RJG, Inc.  
© 2007





# Table of Contents

## **Data Extractor**

System Requirements .....	1
Overview.....	1
Data Transfer.....	1
Getting Data Files.....	1
Getting Configuration Files.....	2
Putting Configuration Files.....	3
Troubleshooting.....	3



# Overview

## Data Extractor System Requirements:

- eDART™ and eDART™ software release 7.15 or higher
- Computer/Laptop with eDART™ System Utilities CD - Version 1.2.0 or higher (includes the Data Extractor)
- Cross over ethernet cable

## Overview:

The fundamental concept is this: Data from any eDART™ can be extracted and pulled into a Windows® format for easy access and use. Configuration files can be easily moved from one eDART™ to another.

## Data Transfer:

Using the cross over cable, hook your laptop to the eDART™ where you ran the data. Make sure that the eDART™ is powered up.

Open the RJG Insight System® folder and double click on eDART™ Data Extractor. This will start the program.

The eDART™ Data Extractor screen will pop up and show a list of the molds that have run on the eDART™ that you are connected to. Choose the mold from which you wish to extract the data. Once the data has been extracted it can be viewed and used through the Analyzer, which can be launched from this program or from your RJG Insight System™ folder.

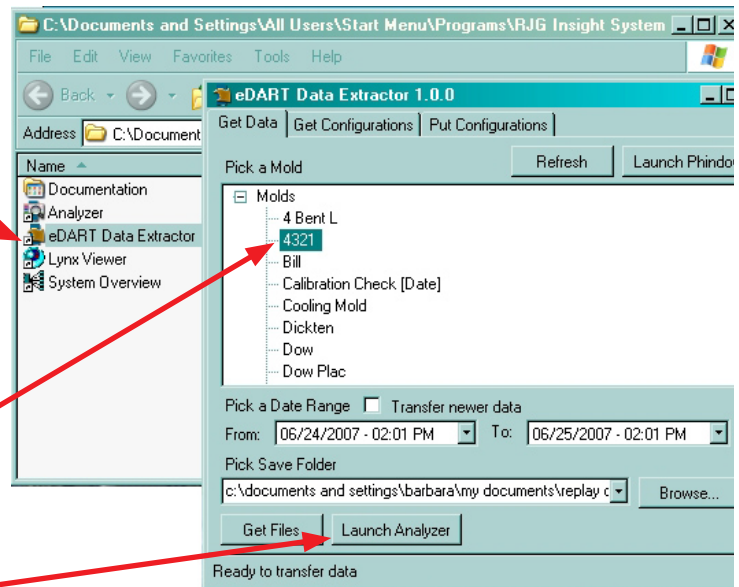


Figure 1: Select your mold

## Getting Data Files:

Next you will select the date range for the data that you would like to transfer. The date range defaults to the past twenty-four hours. To change the date you can click on the pull down. You can also change the date and time by typing in a value or using the arrow keys to adjust it. If you want to transfer all newer data from a mold to your PC you can check the Transfer newer data box.

Then go to the “Pick Save Folder” option and choose where you wish to save the data. It is recommended that the default folder be used to minimize the chance that the data is misplaced. If you have a folder that you place data in already you can change it to that.

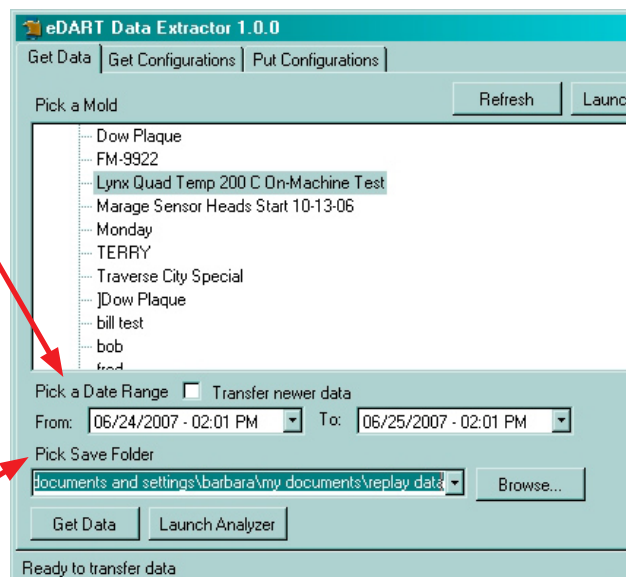


Figure 2: Choose timeframe and location

After a mold, date range and destination folder have been selected you are ready to transfer the data. To start the data transfer click on the “Get Data” button. If the folder that you selected does not exist a message will popup asking if you would like to create it.

The eDART™ Data Extractor will then start transferring data. The status of the transfer will be displayed on the bottom of the screen. The left progress bar shows the progress of the current file being downloaded. The right progress bar shows the progress of the total files being transferred.

The transfer can be cancelled by hitting the Abort button. The status bar on the bottom will show when the transfer is completed.

If there are no newer files in the date range selected a message box will popup (Figure 5).

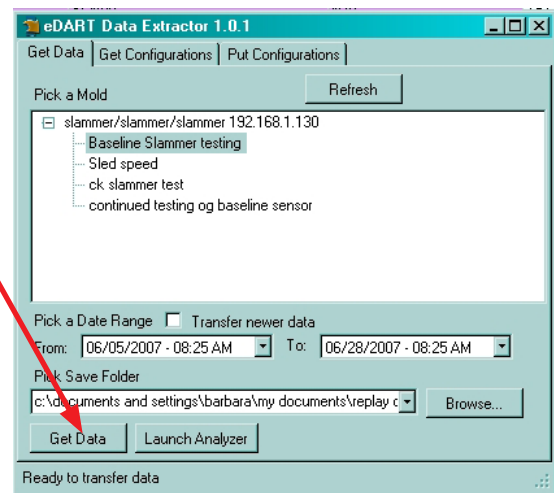


Figure 3: Get data

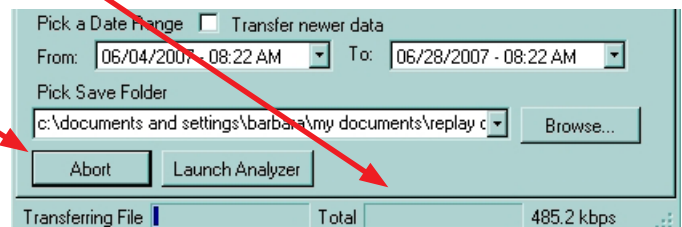


Figure 4: Transferring data

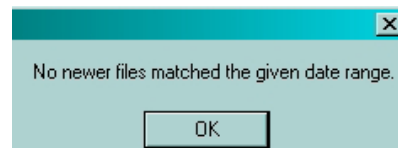


Figure 5: No newer files matched

### Getting Configuration Files:

To start retrieving configuration settings, select the “Get Configurations” tab at the top of the screen. The eDART™ Data Extractor will provide you with a list of molds that are available on the connected eDART™. Highlight the mold that you want to get configuration settings from.

A default folder on your PC should come up in the Pick Save Folder area. You can choose another but it is recommended that you use the default folder. If the folder does not exist, it will prompt you and ask if you want to create it now.

After a mold and destination folder is selected you can start transferring configuration files by pressing the “Get Configuration Button”.

If a file on the eDART™ is older than the one on your PC, it will warn you and ask if you want to overwrite the file on your PC.

The status bar on the bottom will show when the transfer is completed.

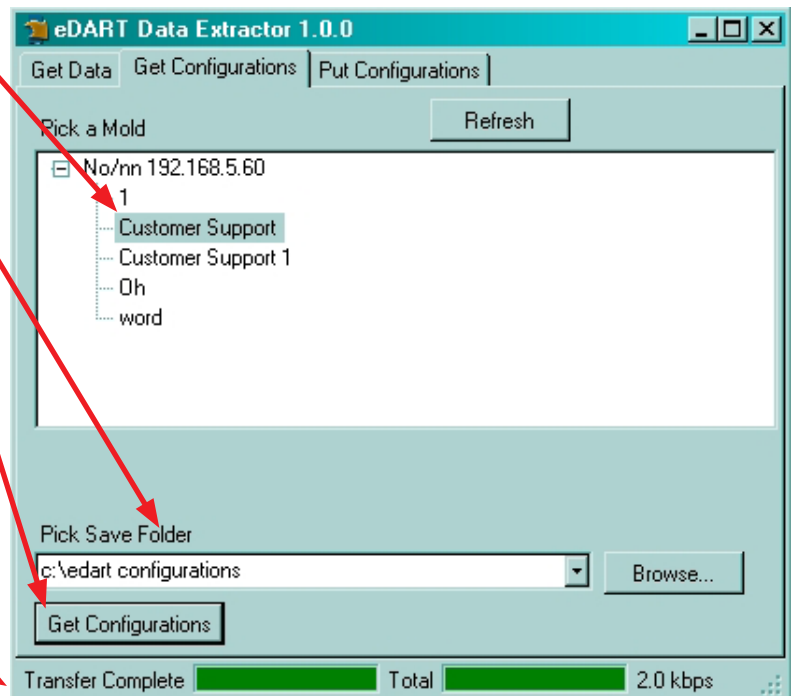


Figure 6: Get configuration files

## Putting Configuration Files:

Connect your laptop to the *eDART™* you wish to transfer the configurations to and open the Data Extractor tool. Select the “Put Configurations” tab at the top of the window. The *eDART™* Data Extractor will provide you with a list of molds that are available on your PC.

Select the folder that has the configuration files you wish to transfer to the current *eDART™*. The folder in which you placed the configurations should come up as the default in the “Pick Configurations Folder” field. If it does not, use the Browse button to the right to locate the folder you placed the information in. Once selected, the mold list should change to display the list that contains the mold information that you wish to download. Highlight the mold from the list and click on the “Put Configurations” button to download the new information to the *eDART™*.

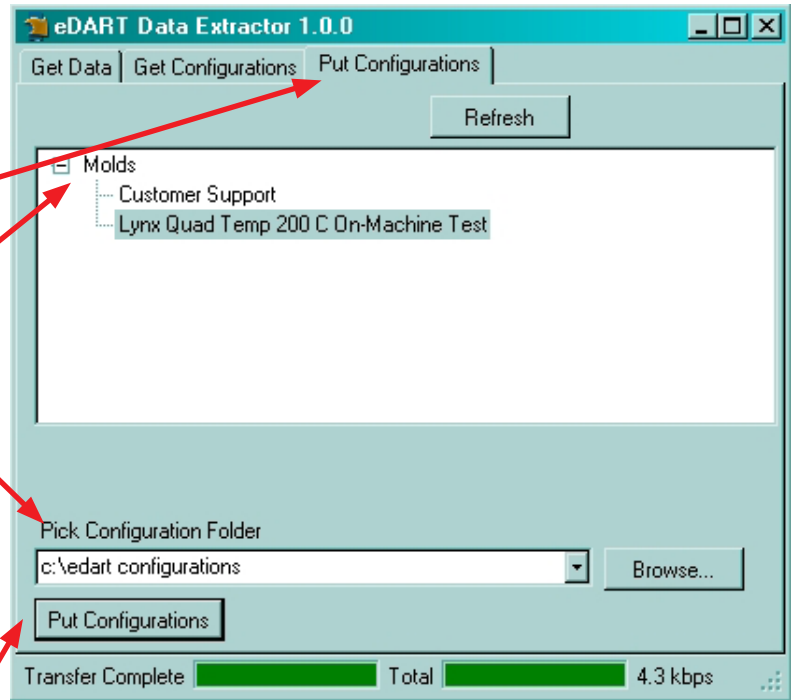


Figure 7: Put configuration files

If a file on the *eDART™* is newer than the one on your PC, it will warn you and ask if you want to overwrite the file on *eDART™*.

The status bar on the bottom will show when the transfer is completed.

## Viewing the Changes

Once the download is completed you may view the *eDART™*, and verify that the new configurations are there, by clicking on the “Launch Phindows” button.

## Troubleshooting:

Problem	Solution
When I connect to the <i>eDART™</i> it shows as not being connected.	Hit the refresh button while on either the Get Data or Get Configurations tab. If this does not work make sure that the cable you are using is a crossover cable.
The molds that are shown are not from the correct <i>eDART™</i> or the molds keep changing when I hit the refresh button.	Make sure that you are not connected to a network with multiple <i>eDART™</i> s. This may include <i>eDART™</i> s that may be on a wireless network. You may have to disable your wireless network card.
When I transfer configuration files it keeps asking whether I want to overwrite files but I know that the files I am transferring are newer.	Make sure that all your <i>eDART™</i> s' times are correct.